

JOINT PARKS AND RECREATION PLAN

2019-2024

TOWNSHIP OF DRYDEN

VILLAGE OF DRYDEN

DRYDEN COMMUNITY SCHOOLS

LAPEER COUNTY, MI



ROWE PROFESSIONAL
SERVICES COMPANY

TABLE OF CONTENTS

INTRODUCTION 1

COMMUNITY DESCRIPTION 2

ADMINISTRATIVE STRUCTURE 5

RECREATION INVENTORY..... 8

REGIONAL FACILITIES 11

PLANNING AND PUBLIC INPUT PROCESS 18

GOALS AND OBJECTIVES 5

ACTION PROGRAM..... 7

APPENDIX 14

INTRODUCTION

A Five-Year Parks and Recreation Plan is a valuable tool for many reasons. A plan provides participating communities with an opportunity to identify recreational need and determine its long-range parks and recreation goals. When a community's adopted plan is approved by the Michigan Department of Natural Resources (MDNR), the community becomes eligible to participate in the Michigan Natural Resources Trust Fund (MNRTF). The MNRTF provides up to 75% of the development costs of a recreation facility and up to 50% of the costs of acquiring park property. A minimum of \$15,000 and a maximum of \$500,000 per project are available per development project. Applications for the grants are due April 1st of each year. While MNRTF grants are extremely competitive, they do provide an opportunity for communities with only limited funds available, to improve their parks systems.

The Township of Dryden, Village of Dryden and Dryden Community School have formed a joint parks and recreation committee, which began the process of developing the Five-Year Parks and Recreation Plan with the intention of promoting greater cooperation and sharing of resources to provide a wide range of recreational opportunities to the residents and students.

COMMUNITY DESCRIPTION

Dryden Township

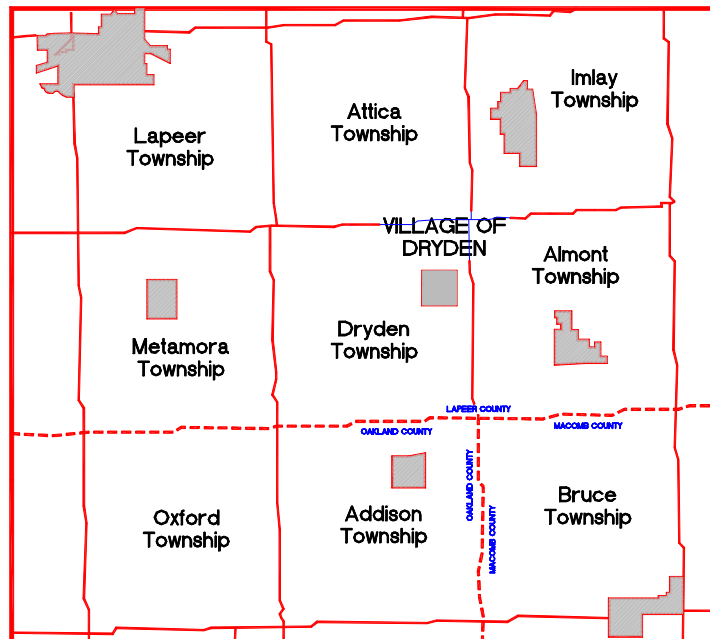
Dryden Township is located in Lapeer County, Michigan; 84 miles East of Lansing, 54 miles north of Detroit. It is a thirty-six square mile rural municipality located in the southeast portion of the county. Other communities in the region include Lapeer, Almont, Hadley and Metamora. As of the 2010 U.S. Census, the total population of the township is 4,768 residents.

The majority age groups are 40-49 with 18.5% and 50-59 with 18%, followed by 10-19 with 15.4% of the population. There are 1,772 households in the township with 29.8% of those having children under the age of 18 living with them according to the 2010 Census. The racial makeup of the township is 97.7% White, 0.1% African American, 0.3% Native American, 0.4% Asian American and 1.5% other races or two or more races.

With the majority of the county rural, a large percentage of residents drive their own vehicle. Transportation routes include M-53 and I-69 to the north. The close proximity of Dryden Township to Oakland and Macomb Counties makes it an ideal location for commuters into the greater Detroit area.

The area is predominately flat to gently rolling; current land uses include light commercial, single-family dwellings, multi-family dwellings, residential, agriculture and civil/institutional.

MAP 1

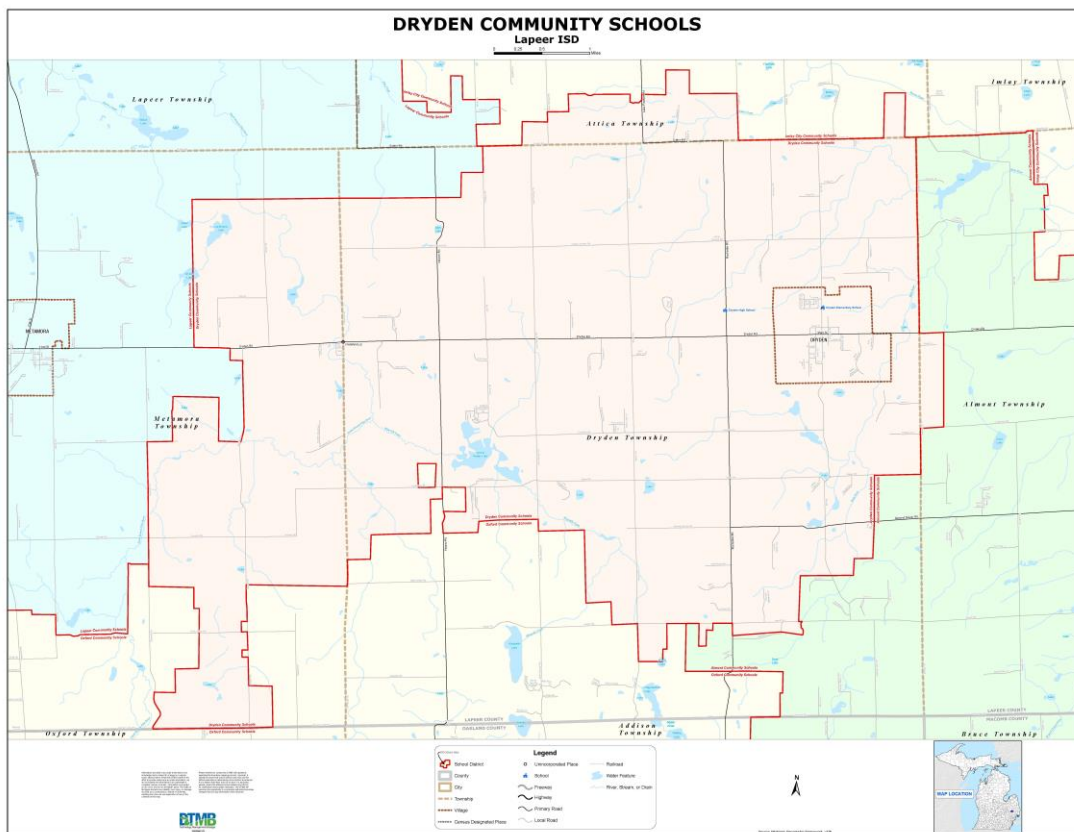


Dryden Community Schools

The Dryden Community School district resides in Lapeer County and encompasses the Village of Dryden, Dryden Township, Attica Township and portions of Metamora Township. Current estimates for student enrollment are at 3,836 (2012-2013 school enrollment). The Dryden Community Schools offers educational programming for students from Preschool through the 12th Grade. They operate Dryden Elementary School located on North Mill Street in the Village of Dryden and Dryden Junior and Senior High School located on Rochester Road a ¼ mile north of Dryden Road.

Daily operations of Dryden Community Schools fall under the direction of the superintendent and the Board of Education. Other programs that exist for students and parents include Special Education programs, the Lapeer County Education and Technology Center and offer the “Schools of Choice” program.

MAP 2



Village of Dryden

The Village of Dryden is an approximately one square mile rural municipality located in the northeast quadrant of the Township of Dryden, which is in the southeast portion of Lapeer County, Michigan. The village had a 2010 population of 951. Dryden Road (a principal east/west state highway) bisects the village roughly in half. The character of the village can be generally described as a “bedroom community” with some local retail trade and services.

ADMINISTRATIVE STRUCTURE

Village/Township/School District Joint Parks and Recreation Committee

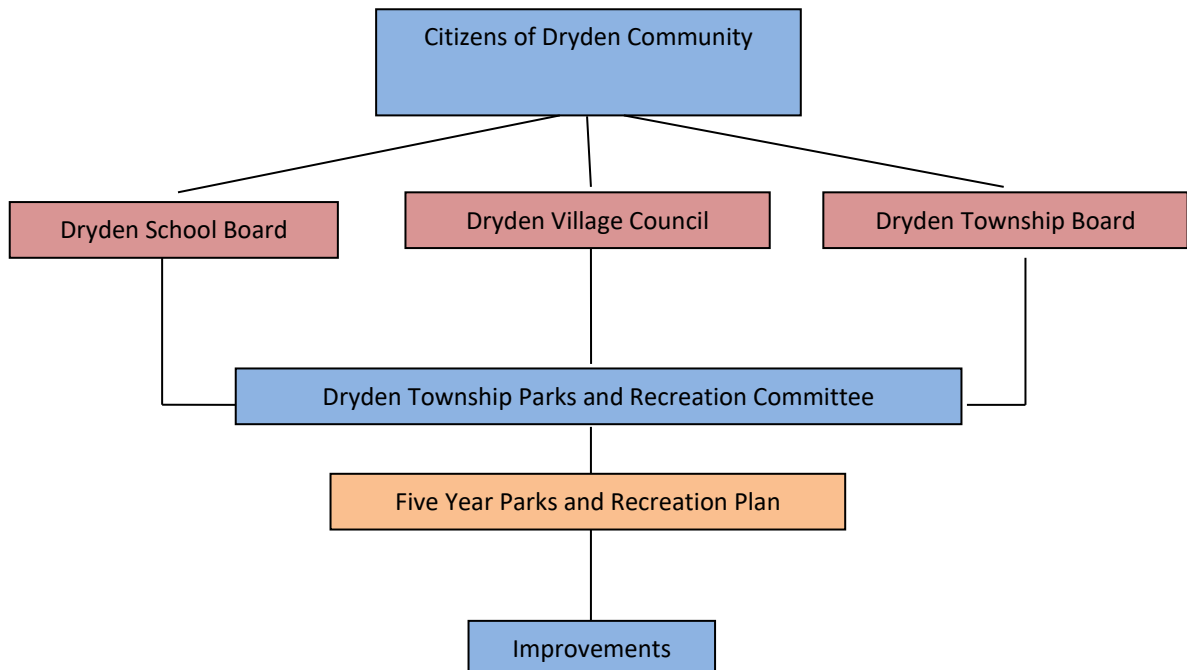
Dryden Township, the Village of Dryden and the Dryden Community School district have formed a joint parks and recreation committee that will oversee and facilitate the meetings towards the successful passage of an updated parks plan for the township and school district. The committee is composed of 3 representatives from each of the jurisdictions.

Dryden Township is defined as a “civil township” under the State of Michigan Article VII § 18 of the Michigan Constitution of 1963. The government is defined by a supervisor, clerk, treasurer and trustees. This board conducts the daily operations of the township and oversees different organizations within the township. The township does not independently own any park land; therefore, there is no recreational budget. The township owns Dryden Memorial Park in the Village of Dryden jointly with the village who maintains the park. The township also owns 10 acres of vacant land adjacent to the Township Hall complex and the Dryden Junior and Senior High School.

Dryden Community Schools is under the direct leadership of a district superintendent who oversees the daily operations. The board of education, led by the president, vice president, secretary, treasurer and trustees are the legislative body for the district and approve all actions presented by the district superintendent. The school district operates two school buildings and one athletic field that are utilized by residents of Dryden Township for recreational activities.

The Village of Dryden is a general law village by an elected village council and village president. Staff includes a village clerk and treasurer.

FIGURE 1



Staff

Because it does not currently have any recreational facilities to maintain or program, Dryden Township does not currently have any maintenance or recreation staff.

Dryden Community Schools contracts out the maintenance of its facilities including the recreation fields and indoor facilities.

The Village of Dryden staff includes a 4 person Department of Public Works, whose responsibilities include maintenance of Dryden Memorial Park.

Funding Sources

Dryden Township's only current recreation expenditures have been annual contributions to the cost of maintenance of Dryden Memorial Park in the Village of Dryden, payment of the electrical bill for the park, and land acquisition. These funds came from the township's general fund. The township's total expenses related to the park from the general fund budget for the 2018 – 2019 fiscal year was \$100,000.

The Dryden Community School District's primary funding source for operations is through the per-student foundation allowance provided by the State of Michigan. Basic maintenance of recreational facilities is handled by the school district. The operational cost of utilizing the buildings come from the general budget. There is not a separate line item in the budget for maintenance of the playfields.

Role of Volunteers

Volunteers promote recreation throughout the community in a wide range of areas:

The Friends of the Polly Ann Trail has over 80 members that are dedicated to promotion of the trail as it runs through Lapeer County. Its efforts have included raising \$10,000 to provide a grant match to fund acquisition of a parcel to connect the trail to General Squier Park, construction of a trail head in Imlay City and promotion of activities taking place on the trail.

Hometown Baseball provides recreational baseball and softball to over 200 youth ages 4-16. Volunteers serve as coaches and assistant coaches to 15-22 teams each year.

Dryden Athletic Boosters facilitate concession sales at youth, junior high and high school sporting events, conduct a golf outing each fall, and provide grants to school coaches to assist their sport programs.

Volunteer groups support and participate in activities at Seven Ponds Nature Center, including an herb group that maintains the facility's herb garden, a bee keeping group that maintains an observation site, and an astronomy club that puts in programs at the center.

RECREATION INVENTORY

Dryden Township Recreational Facilities

1. Dryden Elementary School

Description Located in the Village of Dryden it serves all residents of the community (grades Kindergarten through 6th grade).

Size Six acres

Facilities Playground equipment
Ball-fields (baseball/softball)

Accessibility **3** – Barrier free parking and concrete walkways close to but not connecting playground equipment

Previous MDNR Grant Assistance None



2. Dryden Junior High and Senior High School

Description Dryden Junior/Senior High School houses grades 7th through 12th. The site includes a substantial amount of woods.

Size 100 acres

Facilities Ball Diamonds
Soccer Fields
Track
Basketball Court
Football Fields

Accessibility **3** – Barrier free parking and football stadium, need better access for soccer and ball fields

Previous MDNR Grant Assistance None



3. Cardinal Field

Description The school district operates Cardinal Field, located in the Village of Dryden but the facilities are accessible for residents to utilize.

Size 11 acres

Facilities Pavilion
Parking
Ball Fields

Accessibility 4 – Barrier free access to pavilion and ball fields via paved walkway

Previous MDNR Grant Assistance None



4. Dryden Memorial Park

Description This site is jointly owned by the village and township and is adjacent to the Polly Ann Trail.

Size 0.25 acres

Facilities Gazebo
Benches
Bike Rack
Drinking Fountain

Accessibility 4 – Barrier-free parking, access to gazebo by brick paver path.

Previous MDNR Grant Assistance None



5. Dryden Township Property

Description This site includes the township hall and fire hall, as well as vacant land adjacent to the Dryden Junior and Senior High School property.

Size 10 acres

Facilities Bathrooms

Accessibility 4 – Township hall is barrier free, no rec facilities at this time

Previous MDNR Grant Assistance None



Barrier Free/Accessibility Assessment

The following summaries address the accessibility of village parks and recreation facilities in compliance with the Americans with Disabilities Act Accessibility Guidelines (ADAAG). In general, all construction since 1991 was required to comply with these guidelines.

A general ranking for each park was determined through site visits as follows.

- 1 = none of the facilities/park areas meet accessibility guidelines
- 2 = some of the facilities/park areas meet accessibility guidelines
- 3 = most of the facilities/park areas meet accessibility guidelines
- 4 = the entire park meets accessibility guidelines
- 5 = the entire park was developed/renovated using the principals of universal design

REGIONAL FACILITIES

On a regional level, Dryden Township is located within a 30-mile radius of a number of State and Lapeer County recreation areas and game areas.

State Parks

- A. Lapeer State Game Area** – The Lapeer State Game Area covers over 13,000 acres in Oregon, Mayfield, and Arcadia Townships, in northern Lapeer County.
- B. Metamora–Hadley Recreation Area** – The Metamora–Hadley Recreation Area is located in Hadley Township. The park is 683 acres in size and has beach facilities, camping, mini-cabins, picnic area, picnic shelters, restrooms, showers, hiking trails, beach, concessions, 224 campsites, store, cross country skiing, snowmobiling, and hunting.



- C. Ortonville Recreation Area** – The Ortonville Recreation Area is a 4,097 acre facility that is under the jurisdiction of Oakland County, although a portion of the park is in Hadley Township. The area has a wide range of facilities including 70 campsites, bathroom and showers, picnic area, boat launch, fishing, swimming, cross country skiing, nature trails, playgrounds, and hunting.



- D. Holloway Reservoir** – A portion of the Holloway Reservoir is located in Oregon Township in Lapeer County. The reservoir is a heavily used facility for boating and water skiing. The boat launch facilities on the reservoir are under the jurisdiction of Genesee County.



County Parks

- E. Torzewski County Park** – Torzewski County Park in Oregon Township has a wide range of facilities including a children's play pool, water slides, boat rental, picnic area, nature trails, ball diamond, fishing, cross country skiing, sledding, amphitheater, and pavilions.



- F. General Squier Park** – General Squier Park in Dryden Township is a prime recreational facility utilized by residents from across Lapeer County, located on Mill Road (north of Casey Road). Amenities to the park include baseball diamond, picnic area with grills and pavilion access, cross-country skiing (winter), nature trails, sleeping, fishing with permanent restroom facilities and meeting halls.



Other Area Parks and Recreation Facilities

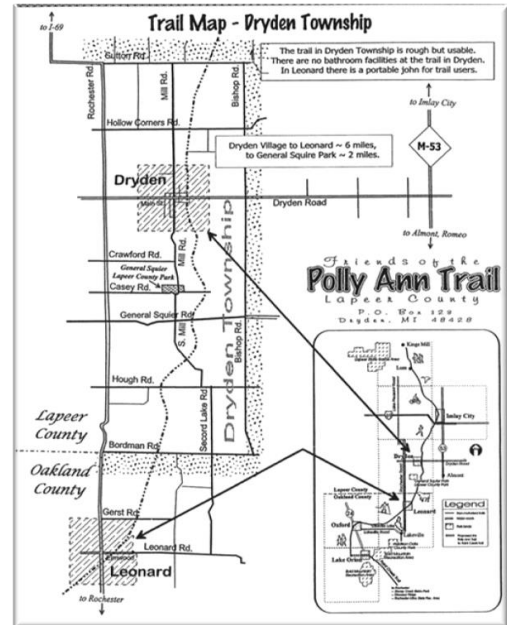
- G. Seven Ponds Nature Center** – The Seven Ponds Nature Center is over 486 acres, and is run by the Michigan Audubon Society. It is located west of Lake George Road, north and south of Crawford Road. The Nature Conservancy, located within 1-mile of the village, also owns Jonathan Woods, a 144-acre tract of land southwest of the Village of Dryden. More than 330 plant species, small mammals and birds may be found here.



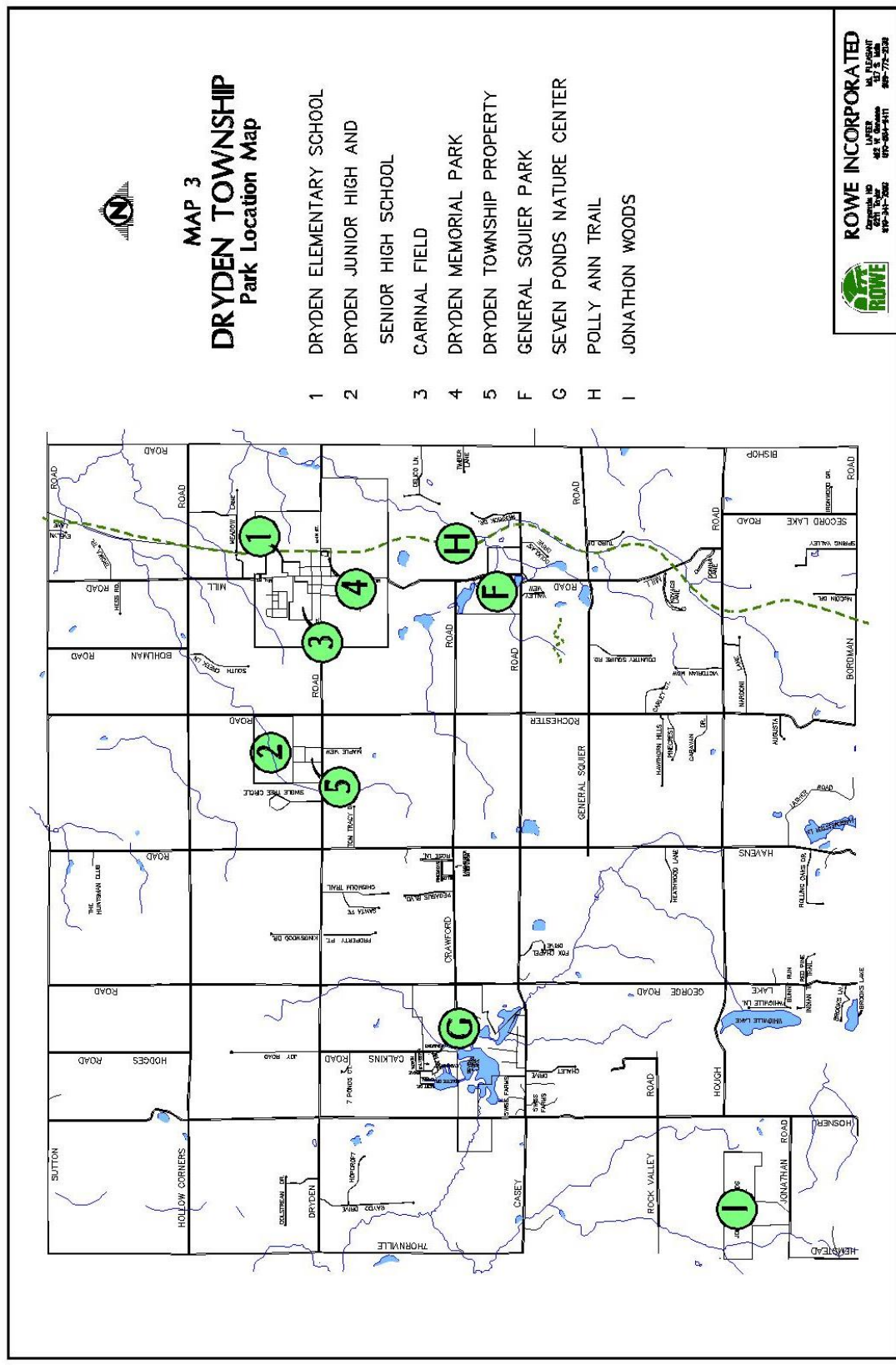
- H. Polly Ann Trail** – Technically two trails, the Polly Ann Trail in Lapeer County and the Oakland County Polly Ann Trail, runs a total of 36 miles from Orion Township north through the Village of Dryden and Imlay City to Kings Mill. It is a state owned non-motorized pedestrian trail following the path of an abandoned railroad corridor.

The Lapeer County portion of the trail was acquired by the MDNR in 1999. The trail is primarily a grass and gravel trail with few improvements to the pathway. Maintenance of the trail is the responsibility of Lapeer County. The MDNR recently authorized contracts to survey the trail right-of-way with plans to make trail improvements in 2014 or 2015.

A seven acre parcel was recently acquired that allows for the connection of General Squier Park and the Polly Ann Trail.



- I. **Jonathan Woods** – Jonathan Woods is a 144 acre preserve in Dryden Township owned and operated by the Nature Conservancy. It is located in the southwestern corner of the township and includes 3 miles of nature trails.



Recreation and Resource Inventory

The following Recreational Inventory is a comprehensive list of public and private recreation areas and facilities in Dryden Township. The inventory will be used as a basis of determining the need for specific recreational facilities in the area. Information was collected and assessments were made on the current facilities that are used by the residents. The following chart is a summary of the local and regional park and recreation facilities available. They have been categorized by jurisdiction, as well as classification based on size and type of facility.

Dryden Township, Village of Dryden and Dryden Community Schools Five-Year Parks and Recreation Plan

		Acreage (approximate)	Ball Diamonds	Football/Soccer	Tennis Courts	Picnic Area	Playground Equipment	Playfield (open)	Nature Trails	Waterfront Property	Shelter	Boat Launch	Restrooms	Classifications	Comments
	Schools														
1	Dryden Elementary School	6												SP	School Property
2	Dryden High School Complex	100												SP	School Property
3	Cardinal Field	11												SP	School Property
	Local Public Facilities														
4	Dryden Memorial Park	0.25												NP	Jointly owned by Township and Village
5	Township Offices	10												-	Township Property
	Regional Recreation														
H	Polly Ann Trail	N/A												RT	Maintained by Lapeer County
G	Seven Ponds Nature Center	486												RP	Natural ecological habitat
F	General Squier Park	87												CP	Meeting Hall available for rent
	Torzewski County Park	69												CP	Children's play pool and waterslide
	Ortonville Recreation Area	4,091												RP	Campsite available with showers
	Metamora-Hadley Recreation Area	683												RP	Campsite available
	Lapeer State Game Area	13,000												RP	Campsite available

-Number denotes location on parks and recreation inventory map

CP = Community Park; RP = Regional Park; NP = Neighborhood Park; SP = School Park; RT = Regional Trail

PLANNING AND PUBLIC INPUT PROCESS

The Dryden Township / Village of Dryden / Dryden Community School Joint Parks and Recreation Committee provided four opportunities for public input as part of the recreation planning process:

1. A series of Recreation Provider stakeholder interviews were conducted with Township and School District residents (see below).
2. A public hearing was held on December 3, 2018 by the Dryden Township / Village of Dryden / Dryden Community School Joint Parks and Recreation Committee prior to their vote on adoption of the plan following a notice published in the paper and access to the draft plan for public review provided.
3. The Plan was adopted at a Township Board public meeting following a notice published in the paper over 30 days prior to the meeting and access to the draft plan for public review provided.
4. The Plan was adopted at a School Board public meeting following a notice published in the paper over 30 days prior to the meeting and access to the draft plan for public review provided.
5. The Plan was adopted at a Village Council public meeting following a notice published in the paper over 30 days prior to the meeting and access to the draft plan for public review provided.

The draft plan was reviewed at a public hearing by Dryden Township / Village of Dryden / Dryden Community School Joint Parks and Recreation Committee at their December 4, 2018 meeting, ~~no~~ members of the public attended. The plan was adopted by the School Board at their December 10, 2018 meeting. The plan was adopted by the Township Board at their December 11, 2018 meeting. The plan was adopted by the Village Council at their December 4, 2018 meeting. Copies of each resolution are included in the plan.

Recreation Provider Interviews

The Dryden Township / Village of Dryden / Dryden Community School Joint Parks and Recreation Committee identified a number of recreation providers in the community. Five of these individuals were interviewed by phone and provided information on their group / organization's activities; volunteer activities; the community's recreation assets and needs, as well as their suggestions regarding the primary goals the plan should focus on and the recreation infrastructure improvement priorities.

Interviewees included representatives of Seven Ponds Nature Center, the Dryden Athletic Boosters, the Friends of the Polly Ann Trail, Hometown Baseball, and horse owners in the community.

Below is a list of some of the greatest strengths and opportunities for current Dryden parks and recreation brought up during the interviews: (+notes when multiple groups noted the same thing)

- Polly Ann Trail located within Dryden
- Improve the Polly Ann Trail to accommodating for all users (cycling, walking, and horses) +
- There is opportunity to connect the Polly Ann Trail with features in the community+
- There is available land near the Polly Ann Trail for improvements
- The general character of the community has lots of open space and natural beauty+
- The park areas are clean
- Small town, trusting, and intimate feel within the community
- The community is supportive and helpful to one another
- There is room to create new/improve facilities within the community
- Has wonderful programs such as Hometown Baseball
- Cardinal Field hosts the Little League ball teams in Dryden
- Consider setting up a farmers' market at Cardinal Field
- There is a nature center in the community
- General Squier Park is beautiful with many assets and appropriately sized
- Fall fest is celebrated in the Village/Township Park
- Lumber yard located in the village
- Memorial Park looks beautiful; many kids take dance photos there and having the Memorial Day parade
- Bell River is a trout fishing area, some minor improvements would make it more accessible
- Mill Pond is a great place to fish and walk

Some of the different challenges within the community related to parks and recreation include: (+ notes when multiple groups noted the same thing)

- Knowing where the different facilities are++
- Increasing visibility of the parks+
- Work on drawing people in from the surrounding region++
- There are not dedicated staff to handling parks and recreation or prioritizing these items++
- Focusing on one goal at a time and implementing it before moving on to the next task
- People feeling safe in the parks with the various drugs and destruction that has been found++
- The parks are underutilized+
- Vandals+
- Lack of an attractions/activities for teenagers
- Lacking maintenance or ability to construct new facilities
- There would be more use of the Polly Ann Trail if the surface was improved

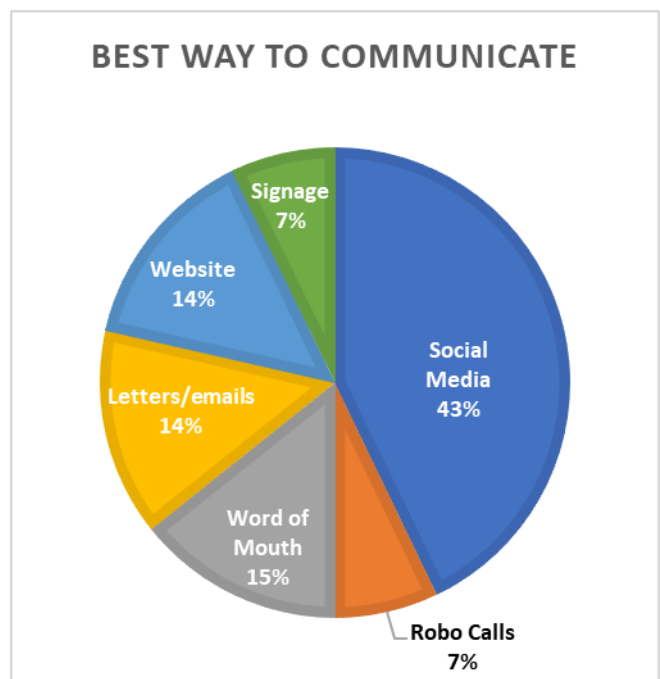
We asked specific questions that catered to some of the different groups we interviewed. Dryden Athletic Booster and Hometown Baseball were asked if additional baseball fields were needed. One organization said additional baseball field were not needed. The other group indicated one additional little league diamond located Cardinal Field would help scheduling games.

Some of the different facilities that could be added to make horse owners to utilize the trail and park facilities include: larger area to allow for trailer maneuverability and parking, a sign indicating how other users should share the trail with horse owners (cyclists/dog walkers), have tie poles near restrooms, and add stable areas near park or restrooms.

We asked all the organizations if they would be supportive of the individuals who would see a dog park, features along the trail (more restrooms, wayfinding signs, mile markers, and pedestrian road crossings). The majority of the individuals felt the community would support a dog park because many people have dogs, but do not have this type of feature nearby. Some of the concerns or things to consider are having a small versus large dog area, not restricting the dog parks to exclude specific breeds, or making sure it is adequately maintained.

Knowing that feeling safe and vandalism is an issue, we asked what the most effective way is to address this concern: lighting, increased patrols, or cameras. Many of the individuals thought all three strategies would work but were most supportive of increased patrols of the parks. If there were more eyes in the park, vandalism would not occur as often, and people would feel more comfortable seeing others.

A variety of methods are used by the different groups to get the word out about events and opportunities. Those strategies included social media pages (Facebook), robo calls, word of mouth, letter/emails, website, and physical signage. Most organizations use and find it effective to use social media. Many of the different organizations commented how expensive hosting your own platform can be and were interested in cross advertising each other's events or doing a joint event.



We asked for all the groups to prioritize 1. maintenance of existing features and facilities, 2. adding additional facilities, or 3. enhancing existing facilities. There was a tie between all the stakeholder interviewed for the most important item to focus on.

Additional comments made during the interview include:

- A trail connecting the Polly Ann Trail to General Squier Park would be great
- Suggested setting up a farmers' market at Cardinal Field
- Would like a center place for the community to gather
- Add Cardinal Field as a location on Google Maps or additional wayfinding signs
- Put up a graffiti rock or wall

A copy of the questions to each of the organizations are included in the Appendix.

Standards for Need

The Michigan Department of Natural Resources has adopted a set of standards to determine the need for certain recreational facilities, based on the population of the community. Table 3 below compares the facilities located in the Dryden Community as identified in the Recreation Inventory to the State's recreational standards.

DRYDEN COMMUNITY RECREATIONAL INVENTORY, 2013 AND STATE RECREATION STANDARDS

Column #1	Column #2	Column #3	Column #4	Column #5	Column #6
Item	Public Facilities	School Facilities	State Standards	Village/ Township Standards	Need 2019
Park Land (acres)	16	115 (11*)	10/1,000	48	21
Soccer Field (A)	—	2 (1*)	1/20,000	1	—
Hiking Trails (mi.)	—	—	1/5,000	1	1.5
Playground (A)	—	1	1/3,000	2	1
Ball Field (A)	—	5 (3*)	1/3,000	2	—
Outdoor Basketball Court (A)	—	4	1/5,000	1	1
Ice Rink (outdoor)	—	—	1/20,000	—	—
Fishing Access (ft.)	—	—	1,000/1,000	4,800	4,800
Picnic Areas (tables)	—	12*	1/200	24	12
Outdoor Swimming Pools	—	—	1/40,000	—	—
Swimming Beaches	—	—	1/25,000	—	—
Sledding Hills	—	—	1/40,000	—	—
Bicycle Trails/Walkways (mi.)	—	0.5*	1/40,000	0.1	—
Tennis Courts (A)	—	—	1/4,000	1	1

*Facilities at Cardinal Field on property owned by the school but shared by the school, village and township

Summary of Comparison Table

The comparison table identifies the types of recreational facilities (Column #1) owned by the Village of Dryden or Dryden Township (Column #2) as well as those owned by Dryden Community Schools within the village or township (Column #3). The State Recreational Standards are listed in Column #4. These standards have been adopted by the State of Michigan Department of Natural Resources to serve as a measurement of need for recreational facilities. Column #5 shows the present demand for each facility, assuming State Standards are to be met. Column #6 illustrates the deficiencies in the current number of facilities within the Dryden Area, assuming a 2010 combined village and township population of 4,786 people.

The comparison table indicates there is a significant demand for many of the recreational facilities listed in Column #1. There are presently about 131 acres of open space available to village and township residents. However, approximately 115 acres of open space is owned and maintained by the Dryden Community Schools. While efforts are made to encourage village and township residents to utilize school facilities whenever possible, during school hours and extracurricular activities, the availability of these facilities for public use is limited. Improvements to Cardinal Field have been a joint effort of the school, township and village and while facilities are available for all residents, the ball fields are primarily occupied by school use. For this reason, it appears that there is demand for recreational park land that is owned, developed, and maintained by the village and/or township.

The comparison table indicates the need for the following: 21 acres of parkland; 1.5 miles of hiking trails; 1 playground; 1 outdoor basketball court; 4,800 feet of fishing access; and 12 picnic tables. The State standard for Bicycle Trails/Walkways is 1 mile per 40,000 population. This appears low, particularly given the recent list of recreational priorities established by the Michigan Department of Natural Resources, which emphasizes the development of pedestrian pathway systems throughout the State. A standard of 1 mile per 5,000 people appears to be more appropriate. Based on this observation, it appears that there is a need for about 0.5 miles of bike trails/walkways in the village and township.

These findings were considered by the Joint Parks and Recreation Committee, together with the results of the recreation provider interviews, as a basis for developing the Goals and Objectives as well as the Action Plan.

GOALS AND OBJECTIVES

In evaluating the recreational needs of the community, the Joint Parks and Recreation Committee conducted a “Prouds and Sorries” exercise at their kick-off meeting to preliminarily identify the assets and deficiencies in recreational opportunities in the community. This list was then compared with the comments from recreation providers and the results of the recreation inventory. Based on this data a preliminary set of goals and objectives were prepared and reviewed with the committee. They were then reviewed by the public at the hearings for the plan.

GOAL 1

Maximize recreation opportunities for residents and students through coordination and promotion of activities.

Basis for Goal: There are a wide range of groups and recreational facilities in the community. At the same time the township, the school district, and residents are finding necessary to do more with less. An effort to coordinate the recreational activities, improve coordination of facilities and more effectively promote both the facilities and programs to the public should reduce duplication, improve the utilization of existing and future facilities, and increase the range and number of opportunities available.

Objective 1A: Provide a forum for on-going coordination of recreational planning in the township, village, and school district, incorporating as many stakeholders as possible.

Objective 1B: Create new channels of promotion of recreational opportunities to the public.

GOAL 2

Expansion and enhancement of non-motorized paths within the Dryden Community.

Basis for Goal: The township and school recognize the significant resource provided by the Polly Ann Trail running through the community. They also recognize the need to provide safe routes to school for the young and safe routes through the community for an aging population less inclined to drive. (31% of the township’s population is either under 15 or over 65 years old)

Objective 2A: Promote improvement of the portion of the Polly Ann Trail running through Lapeer County.

Objective 2B: Expand connections with the Polly Ann Trail.

Objective 2C: Develop non-motorized pathways connecting the school, township and village facilities.

Objective 2D: Identify opportunities for development of non-motorized connections with subdivisions, open spaces and institutions throughout the community during review of new developments and through informal agreements of property owners.

Objective 2E: Implement wayfinding elements and trail features such as mile markers and benches at all the existing trails and paths.

Objective 2F: Develop a cross country running trail at the high school to connect to the adjacent Dryden Township property.

Goal 3

Provide additional space and facilities for non-structured recreational activities for residents and students.

Basis for Goal: A review of existing recreational facilities indicated that most are designed for formal recreational activities such as football, baseball or soccer and that there is a limited area for informal or non-structured recreational activities such as picnicking, skating, etc.

Objective 3A: Identify, acquire and develop additional property when appropriate to provide space for non-structured recreational activities.

Objective 3B: Develop picnicking and playground uses in existing park facilities.

Objective 3C: Work with community groups and other organizations to program activities such as “music in the park”, environmental education sessions, and youth volunteering opportunities in suitable facilities.

Objective 3D: Identify, acquire, and develop an appropriate location for a dog park.

Objective 3E: Identify, acquire, and install an appropriate location for a graffiti rock.

Goal 4

Enhance Cardinal Field for structured recreational activities.

Basis for Goal: Interviews with recreation providers indicate this community asset could use improvements.

Objective 4A: Work with other organizations such as churches and civic organizations to provide improvements to ball fields they own or may develop in the future.

Objective 4B: Develop under-utilized recreational areas such as “mill” in the village, the Township Hall property, and General Squier Road property. Such improvements could include additional parking, restrooms, and a farmers’ market in the village.

ACTION PROGRAM

Basis for Action Plan

The basis for this action plan is the Joint Parks and Recreation Committee's review of its goals and objectives, recreation brainstorming sessions held with the Township Planning Commission and School Board, and improvements proposed by recreation providers and the general public.

Action Plan

The following is a list of recommended parks and recreation improvements for the Village of Dryden, Dryden Township and Dryden Community Schools, along with justifications for each. The locations of proposed improvements are shown on Map 5. An updated version of the Cardinal Field Concept Plan, originally prepared in 1999, is included as Map 6.

A. Purchase parcel adjacent to township hall site (Township)

A ten acre parcel is located directly east of the property owned by Dryden Township. By acquiring this property, the township would significantly increase the area available for a future township park to provide unstructured recreational activities.

Purchase of this property for development of a township park is supported by Objective 3A of this plan.

B. Develop vacant property adjacent to township hall (Township)

The property proposed for purchase in Item A above, along with the vacant property behind the Township Hall and Fire Station, can be developed to provide recreational opportunities for families and community groups. The development of the park would also necessitate expansion of the township's ability to maintain and program the facilities. Proposed improvements could include:

- Picnic pavilions with bathrooms
- Play structures
- Horse shoe pits
- Skateboard park
- Tennis courts
- Seasonal ice skating rink
- Volleyball courts
- Perimeter walking path
- Informal playfields
- Pickleball

Development of a township park is supported by Objective 3A and 4A of this plan.

C. Develop paths linking the school, township and village (Village, Township and School Facilities)

Non-motorized pathways linking the schools, the village, the township and the recreational facilities will improve student safety and promote physical activity. The initial elements of the non-motorized path would be:

1) Junior High and Senior High School to Township Hall

This segment would run from the south property line of the school through the proposed Township Park to the Township Hall

2) Township Hall to Cardinal Field

This segment would run along either the north or south side of Dryden Road within the road right-of-way. The advantage of using the north side of the road is it would avoid a crossing of Dryden Road and the sidewalk system in the village extends further west towards the township than on the south side. The advantage of the south side is that there is less development fronting on that side of the road and potential less concern from property owners that would be adjacent to the trail.

3) General Squier Park to Polly Ann Trail

Lapeer County and the Friends of the Polly Ann Trail have acquired seven acres connecting General Squier Park to the Polly Ann Trail. The property now needs to be improved to provide the physical connection. While the work would be the responsibility of Lapeer County, the township can support the efforts to fund this project.

Development of these trails is supported by Objectives 2B, 2C and 2D of this plan.

4) County Road Commission Property

Lapeer County Road Commission owns property on General Squier Road adjacent to the Polly Ann Trail that they have discussed selling to Dryden Township. Dryden Township proposes to acquire this property and develop it as a trailhead for the trail.

Development of these trails is supported by Objectives 2B, of this plan.

D. Establish permanent Joint Parks and Recreation Committee (Village, Township and School)

To help coordinate future efforts by the township, village and the school district the Joint Parks and Recreation Committee would be made a permanent joint committee reporting to both jurisdictions. The committee would have the responsibility of identifying and recruiting other organizations such as Friends of the Polly Ann Trail to work with the committee on coordinating recreation programming and facilities.

Establishment of a permanent committee is supported by Objectives 1A of this plan.

E. Develop recreation information website and social media (Village, Township and School)

To help promote the recreational opportunities develop a Dryden Recreation Website and social media available as a link from many different group's websites (i.e.: Dryden Chamber of Commerce, School District, etc.). This website could list seasonal activities available to residents as well as contact numbers, hours, etc. Build an advertisement for new, as well as current, members to our community.

Establishment of the website is supported by Objective 1B of this plan.

F. Improvements to Dryden Memorial Park (Village and Township)

Provide enhancements to Dryden Memorial Park to improve its use as a Polly Ann Trail trail head. These would include installation of hitching posts, bathrooms, brick paver sidewalks and improvements to the trail surface.

These improvements to Dryden Memorial Park are supported by Objective 2B of this plan.

G. Development of additional ball fields (School)

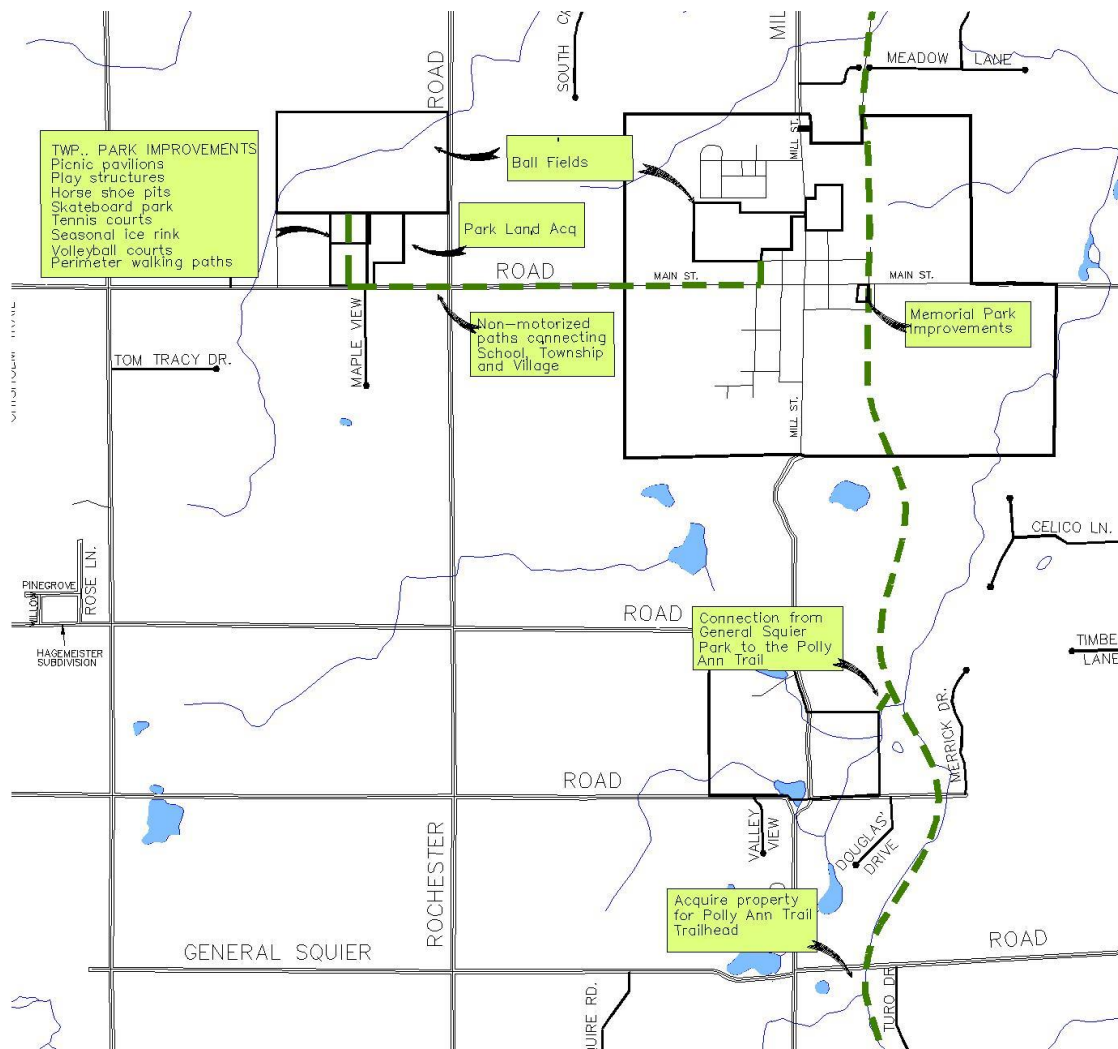
1) Township Hall to Cardinal Field

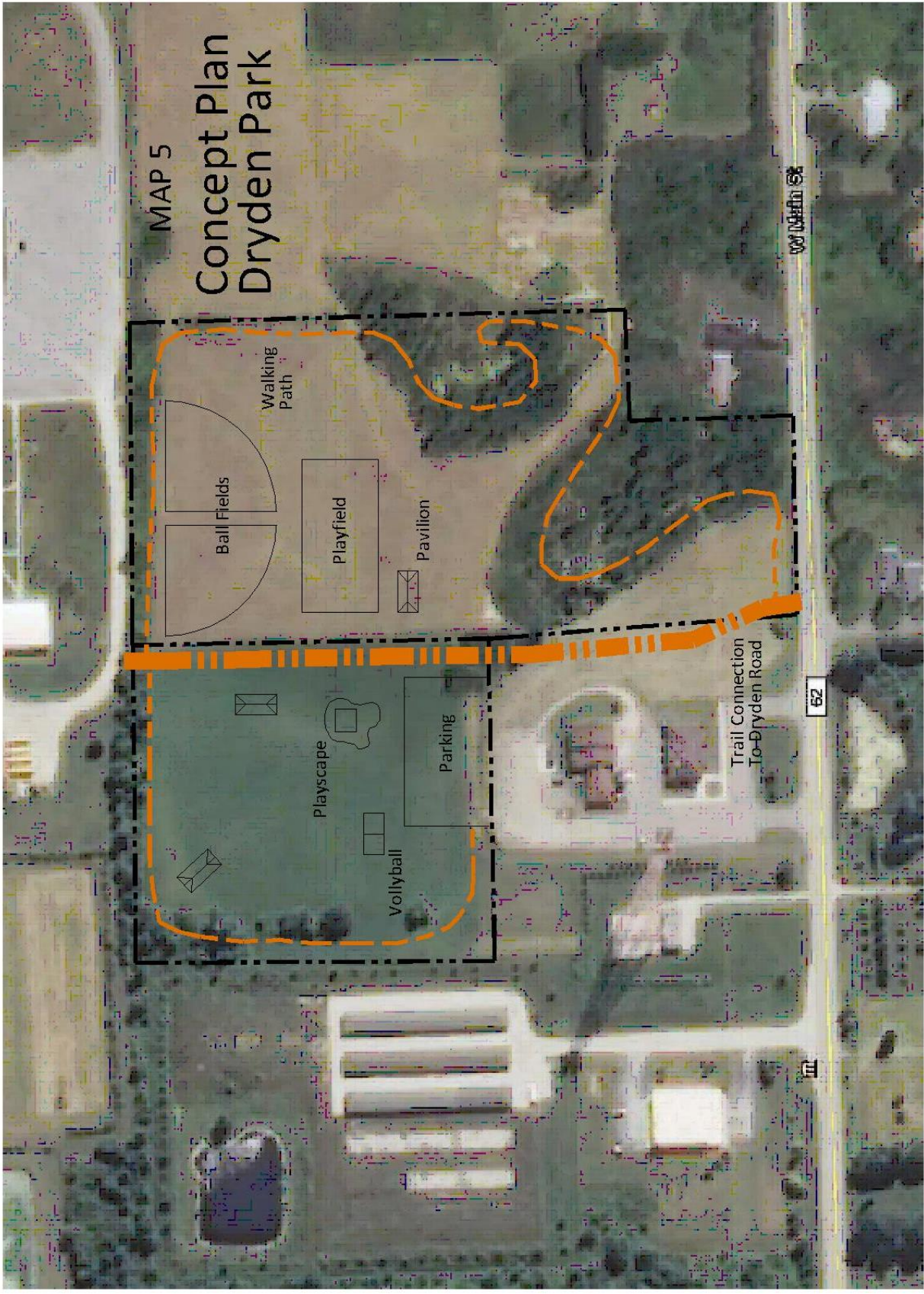
Development of a soccer field at Cardinal Field and/or fitness area.

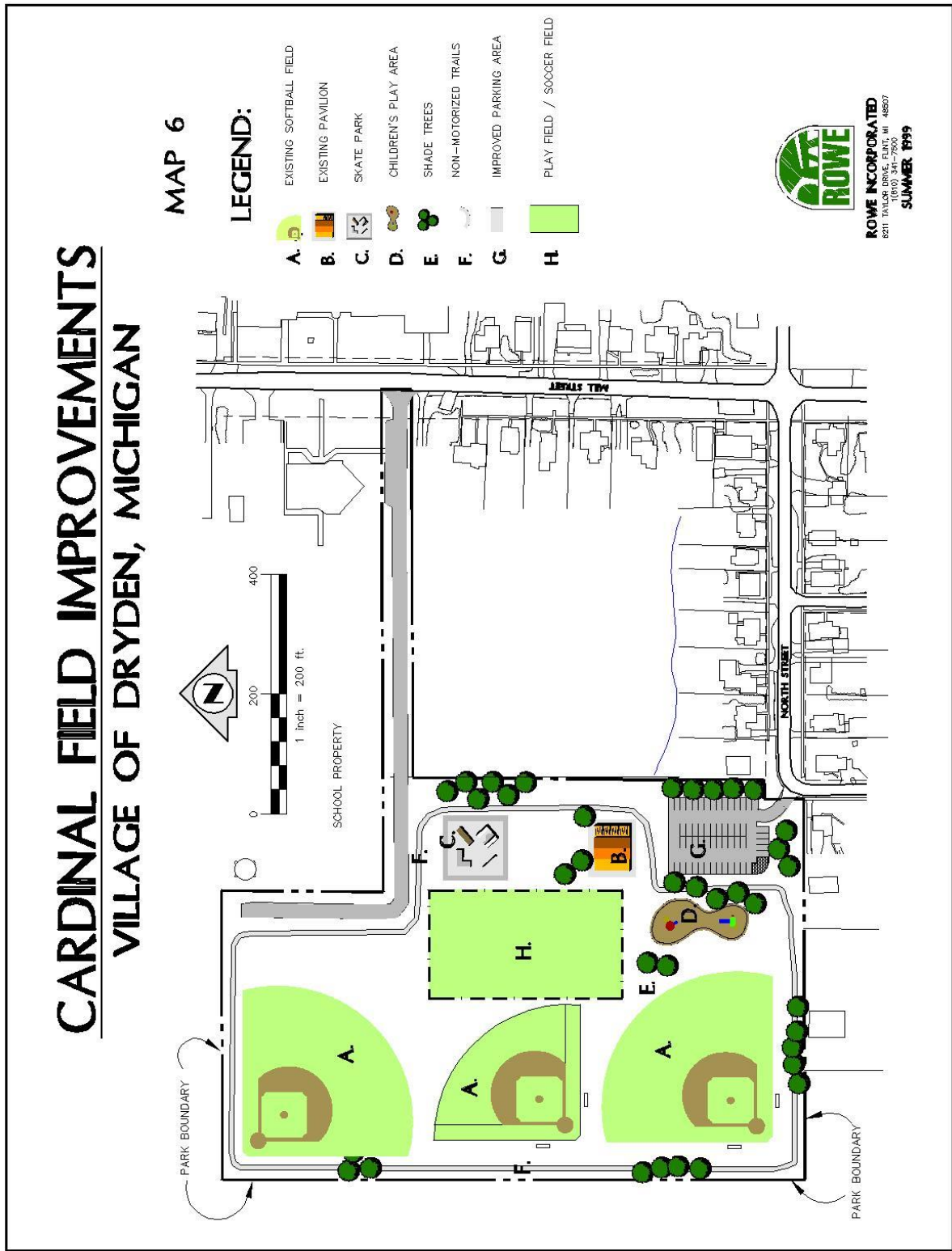
These improvements to Dryden Memorial Park are supported by Objectives 4A and 4B of this plan.

Map 4

Park Improvement Locations







LOCAL ADOPTION

- Notice of Public Review and Public Hearings – December 12, 2013
- Township/School District Joint Parks and Recreation Committee Public Hearing – January 6, 2014
- Township/School District Joint Parks and Recreation Committee Adoption – January 13, 2014
- Dryden Township Board Public Hearing and Adoption – January 14, 2014
- Dryden Community Schools Public Hearing and Adoption – February 3, 2014

APPENDIX

- Minutes including resolution of Township/School District Joint Parks and Recreation Committee Public Hearing
- Plan Certification Checklist, Resolution and Minutes Dryden Community School District
- Plan Certification Checklist, Resolution and Minutes Dryden Township
- Plan Certification Checklist, Resolution and Minutes Village of Dryden
- Transmittal Letters
- Copies of Notices
- Post Completion Self-Certification Reports – Not required, neither school, village or township have received grants from MDNR

R:\sdsk\Proj\F11641\docs\Parks and Rec\Parks and Recreation Plan 2019 - 2024\Plan Drafts\2019- Dryden Township-School-Village Parks and Rec Plan.doc

Organization: Dryden Athletic Booster

Date: _____

1. What do you see as the greatest strength of the current parks and recreation opportunities in Dryden?
2. What do you see as the greatest opportunity for parks and recreation in Dryden?
3. What challenges do you feel keep parks and recreation in Dryden held back from their potential?
4. Do you see a need for additional baseball fields in Dryden?
5. Are there any sport facilities that Dryden should consider adding to the park system?
6. Would you see there being community support for a dog park?
7. How would you see the community supporting these features along the trail: More restrooms, wayfinding signs, mile markers, and more pedestrian road crossings?
8. What do you think would be more effective to address safety and vandalism in parks: Lighting, increased patrol, cameras?
9. What is the best way your organization communicates with the public?
10. What should be the highest priority: 1. Maintenance of existing features and facilities; 2. Adding additional facilities (new trails, sport facilities, dog park, new park space); or 3. Enhancing existing facilities (replacing equipment, adding features like benches to baseball fields)?
11. Any additional comments?

Organization: Dryden Student Council

Date: _____

(Quick Ice Breaker: Identify the location and name of the different parks in Dryden)

1. What do you see as the greatest strength of the current parks and recreation opportunities in Dryden?
2. What do you see as the greatest opportunity for parks and recreation in Dryden?
3. What challenges do you feel keep parks and recreation in Dryden held back from their potential?
4. What are some of the Dryden's parks biggest challenges?
5. What are some different facilities or features that you would like to see in Dryden?
6. Would you see there being community support for a dog park?
7. How would you see the community supporting these features along the trail: More restrooms, wayfinding signs, mile markers, and more pedestrian road crossings?
8. What do you think would be more effective to address safety and vandalism in parks: Lighting, increased patrol, cameras?
9. What is the best way your organization communicates with the public?
10. What should be the highest priority: 1. Maintenance of existing features and facilities; 2. Adding additional facilities (new trails, sport facilities, dog park, new park space); or 3. Enhancing existing facilities (replacing equipment, adding features like benches to baseball fields)?
11. Any additional comments?

Organization: Hometown Baseball

Date: _____

1. What do you see as the greatest strength of the current parks and recreation opportunities in Dryden?
2. What do you see as the greatest opportunity for parks and recreation in Dryden?
3. What challenges do you feel keep parks and recreation in Dryden held back from their potential?
4. Do you see a need for additional baseball fields in Dryden?
5. Would you see there being community support for a dog park?
6. How would you see the community supporting these features along the trail: More restrooms, wayfinding signs, mile markers, and more pedestrian road crossings?
7. What do you think would be more effective to address safety and vandalism in parks: Lighting, increased patrol, cameras?
8. What is the best way your organization communicates with the public?
9. What should be the highest priority: 1. Maintenance of existing features and facilities; 2. Adding additional facilities (new trails, sport facilities, dog park, new park space); or 3. Enhancing existing facilities (replacing equipment, adding features like benches to baseball fields)?
10. Any additional comments?

Organization: Friends of the Polly Ann Trail

Date: _____

1. What do you see as the greatest strength of the current parks and recreation opportunities in Dryden?
2. What do you see as the greatest opportunity for parks and recreation in Dryden?
3. What challenges do you feel keep parks and recreation in Dryden held back from their potential?
4. Would you see there being community support for a dog park?
5. How would you see the community supporting these features along the trail: More restrooms, wayfinding signs, mile markers, and more pedestrian road crossings?
6. Are there any features or improvements to the trails that you would like to see in Dryden?
7. What do you think would be more effective to address safety and vandalism in parks: Lighting, increased patrol, cameras?
8. What should be the highest priority: 1. Maintenance of existing features and facilities; 2. Adding additional facilities (new trails, sport facilities, dog park, new park space); or 3. Enhancing existing facilities (replacing equipment, adding features like benches to baseball fields)?
9. What is the best way your organization communicates with the public?
10. Any additional comments?

Organization: Seven Ponds

Date: _____

1. What do you see as the greatest strength of the current parks and recreation opportunities in Dryden?
2. What do you see as the greatest opportunity for parks and recreation in Dryden?
3. What challenges do you feel keep parks and recreation in Dryden held back from their potential?
4. Would you see there being community support for a dog park?
5. How would you see the community supporting these features along the trail: More restrooms, wayfinding signs, mile markers, and more pedestrian road crossings?
6. What do you think would be more effective to address safety and vandalism in parks: Lighting, increased patrol, cameras?
7. What is the best way your organization communicates with the public?
8. Are there potential win-win situations that have not been utilized (joint events, cross advertising, etc.)?
9. What should be the highest priority: 1. Maintenance of existing features and facilities; 2. Adding additional facilities (new trails, sport facilities, dog park, new park space); or 3. Enhancing existing facilities (replacing equipment, adding features like benches to baseball fields)?
10. Any additional comments?

Organization: Horse Owners

Date: _____

1. What do you see as the greatest strength of the current parks and recreation opportunities in Dryden?
2. What do you see as the greatest opportunity for parks and recreation in Dryden?
3. What challenges do you feel keep parks and recreation in Dryden held back from their potential?
4. Are there any specific features or facilities related to horses that should be improved or added?
5. Would you see there being community support for a dog park?
6. How would you see the community supporting these features along the trail: More restrooms, wayfinding signs, mile markers, and more pedestrian road crossings?
7. What do you think would be more effective to address safety and vandalism in parks: Lighting, increased patrol, cameras?
8. What is the best way your organization communicates with the public?
9. What should be the highest priority: 1. Maintenance of existing features and facilities; 2. Adding additional facilities (new trails, sport facilities, dog park, new park space); or 3. Enhancing existing facilities (replacing equipment, adding features like benches to baseball fields)?
10. Any additional comments?